



# Crankk official guide for onboarding a Panther X1/X2 gateway

- 1) Install Crankk
- 2) Local Dashboard setup
- 3) User Dashboard setup



This guide is applicable to both Panther X1 and X2 gateways.

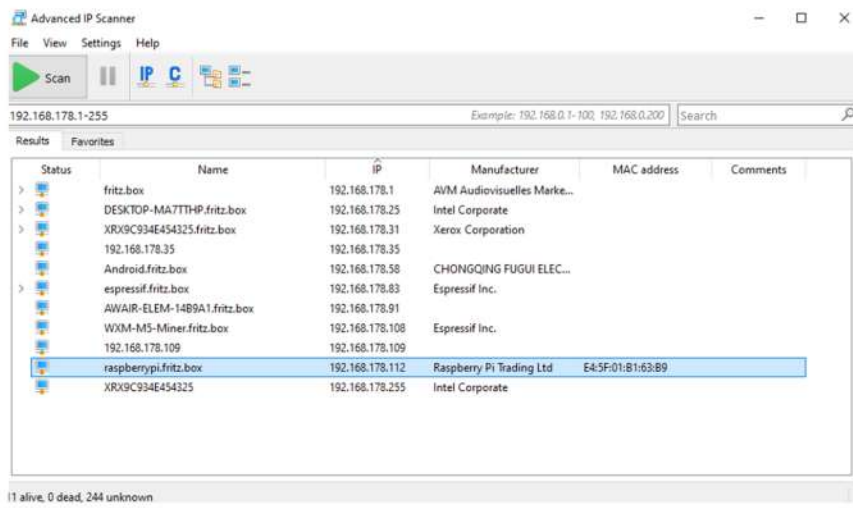
## 1) Install Crankk

### 1. Login to Panther X1/X2 admin dashboard.

The credentials are actually your username and password for your **Panther admin dashboard**.

First, you have to reset your default password and set your own. If you already done that in the past, please go to step 3 and proceed with downloading **Crankk Installer**.

First find your gateway local IP, by checking your home router. If you are unsure how to do this, you can use tools like **Advanced IP Scanner** to help you out. Check your device **MAC address** to find the correct IP address.



Once you have the IP, open a new browser tab on your PC and enter it to open Panther admin dashboard.

**https://YourGatewayIPhere**

Then enter the default credentials:

Username: **admin**

Password: **admin**

## 2. Reset your password.

Navigate to **Tools > Reset Password**



Set a secure password, which you can use later on to login to Crankk installer.

Since Crankk already has a packet forwarder, you need to deactivate the forwarder on the Panther dashboard. Navigate to Home tab. It's the icon located next to Bluetooth.

### 3. Download Crankk Installer.

Access the download link for **Crankk Installer** [here](#) for Windows.

Download the software.

Install **Crankk Installer** on your PC.

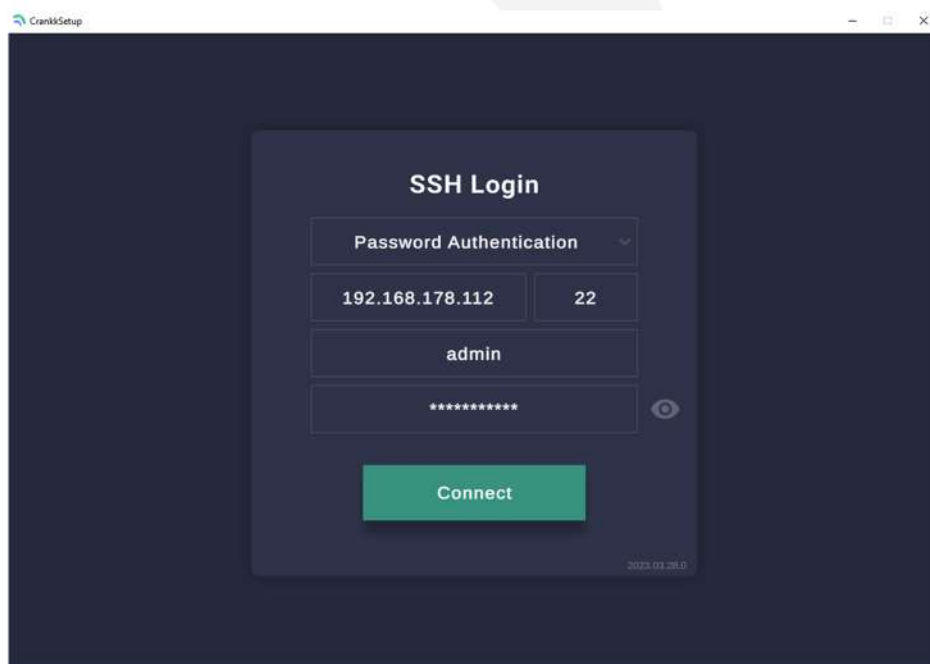
### 4. Login screen

Type in the gateway **IP**.

The default port is **22**

Username: **admin**

Password: **your new password from panther admin dashboard**



## 5. Install Crankk.

Once you are logged in, please select **Install Crankk**.

After it's done, exit the installer, restart the device and log in to the local dashboard.

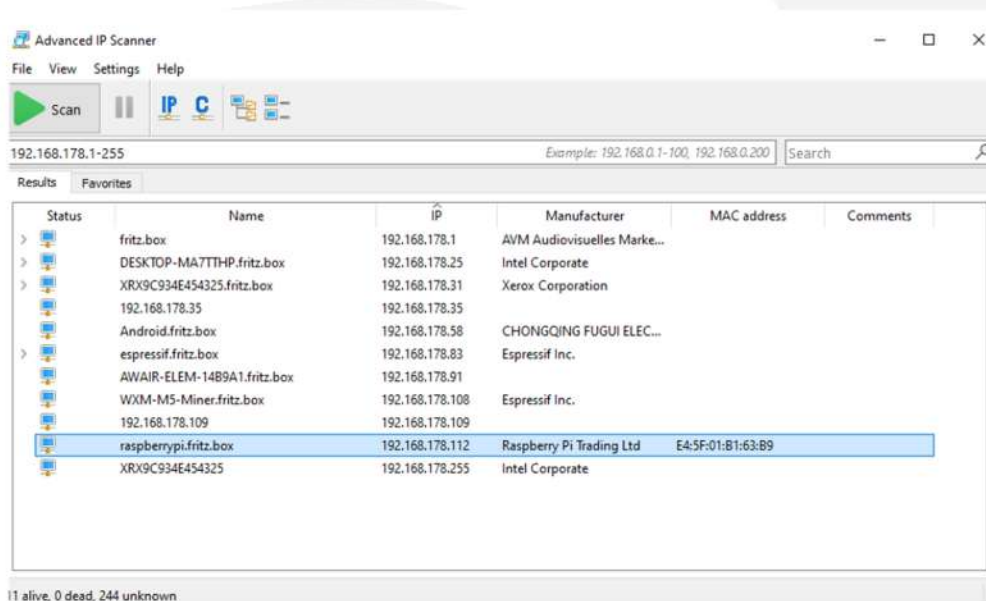
## 2) Local Dashboard setup

### 6. Log in to the Local Dashboard.

If you have any VPN enabled on your PC, please turn it off.

Now check your router to find the **gateway IP address**.

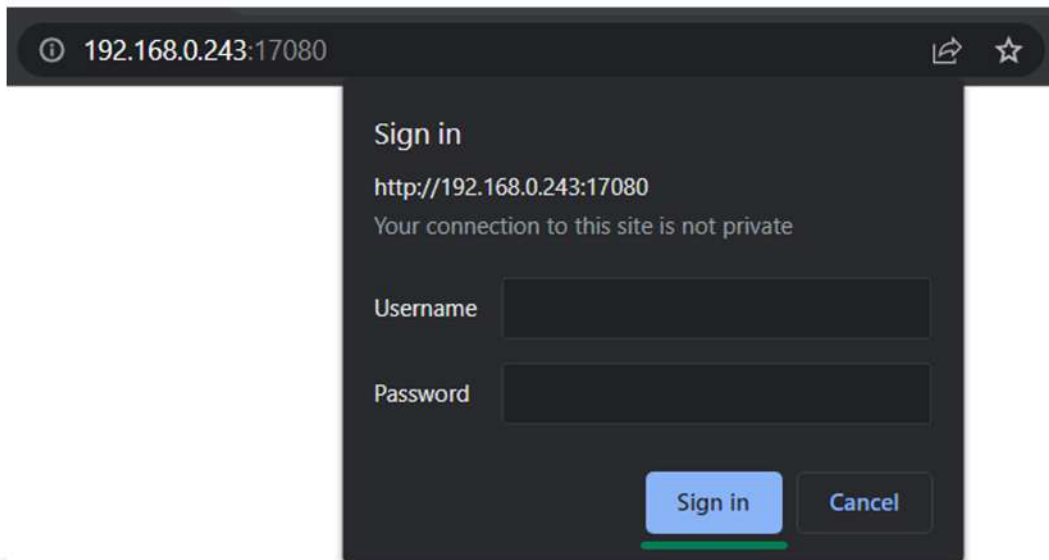
If you are unsure how to do this, you can use free tools like **Advanced IP Scanner** to help you out. Check the **MAC address** of your gateway to find the correct IP address.



Once you have the LAN IP address of your gateway, open a new browser tab from a PC on the same network and paste the IP followed by **:17080**

**http://192.168.0.243:17080**

When logging in for the first time, you do not need to enter any credentials, just press **Sign in**.



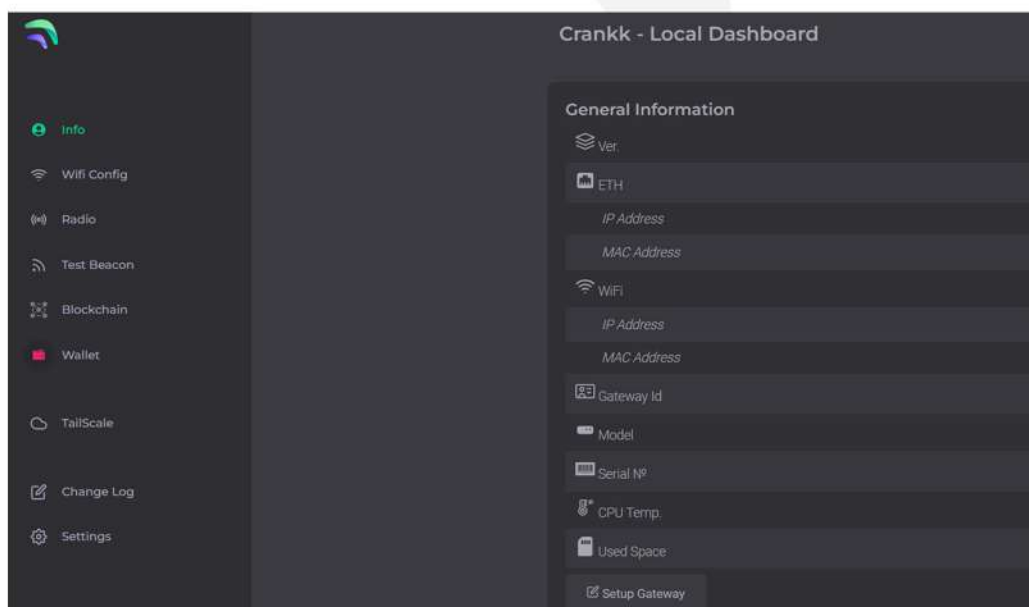
After setting up your gateway, next time you can log in with the following credentials:

- Username: **admin**
- Password: **the last 6 symbols of the gateway's MAC address (e.g. B163B9)**

Please note that you can change the password in the **Settings** tab.

## 7. Set up the gateway.

Go to the **Info** tab > **Setup Gateway**



**Gateway Setup**

Image: Helium ✓ Model: Panther X1/X2 ✓ Region: EU868 ✓

Gateway ID: 001616fffe4f1cd6

Packet Forwarder

Multiplexer Port: 17000 Forwards To: 127.0.0.1:1700,127.0.0.1:1680

**Save** **Cancel**

Copy your **Gateway ID**, as we will need it later.

Select the **Image** that is installed on your gateway (Crankk / Helium / Nebra), **Model** and **Region\*** (EU868 / AU915 / US915).

Turn on the **Packet Forwarder**.

If you are currently mining or planning to mine Helium, leave the **Forwards to** box unchanged as shown in the screenshot.

If you don't wish to mine Helium, leave only **127.0.0.1:1700**

Hit **Save**.

Your gateway will restart automatically. Please wait a few minutes while it loads.

## 8. Double mining.

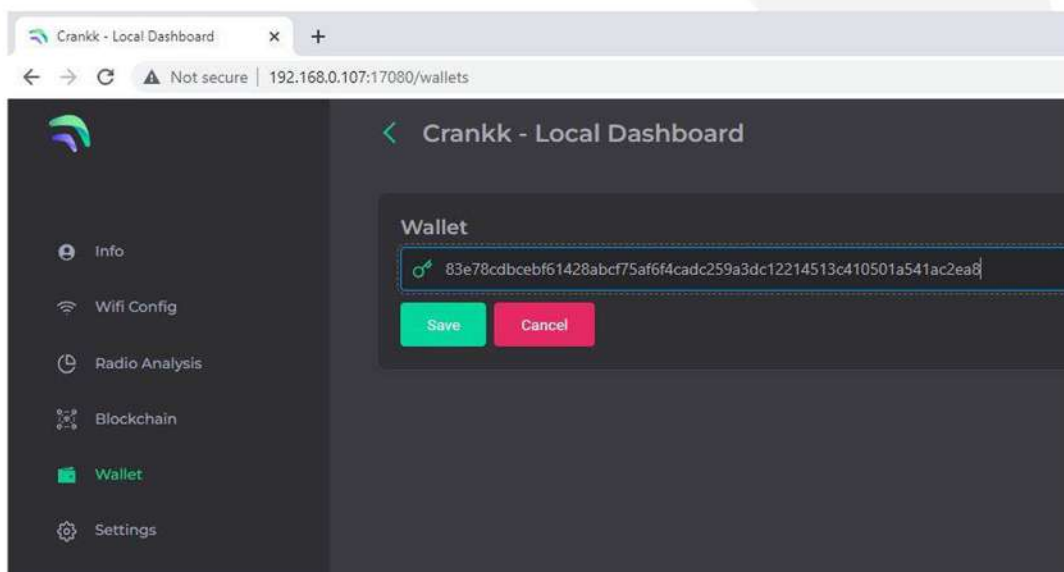
Since you are installing Crankk software directly onto the internal memory (eMMC) of the Panther, Helium should already be running. No further adjustments are needed for dual mining.

## 9. Import your secret key.

Hint: If you don't have your secret key saved, you can go to the **User Dashboard > Wallets > find the correct wallet > use the three dots to reveal the secret key.**

Navigate to the **Wallet** section in the **Local Dashboard** and enter your **secret key**, keeping the following in mind:

- Please ensure that you copy and paste the **secret key** exactly as it is, without any spaces or other symbols
- Please double-check that it is the correct **secret key** and that it does not belong to another gateway
- Please also note that your **secret key** is different from your **wallet address/public key** starting with k:



Hit **Save**.

If you have entered the correct secret key, then you will see your **k: wallet address** displayed in the **Wallet** field.

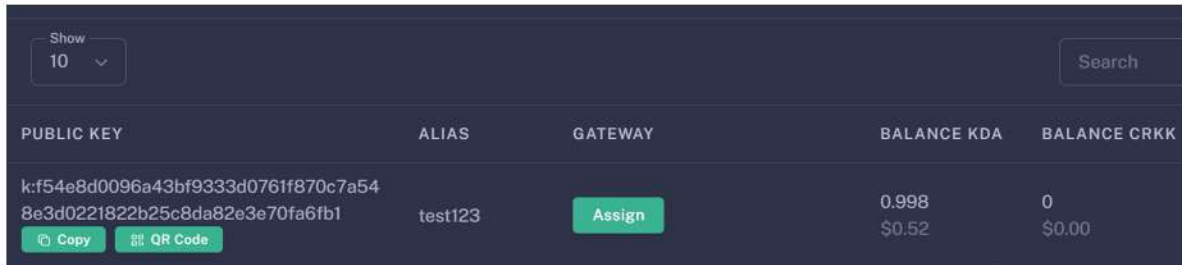
## 3) User Dashboard setup

### 9. Assign your gateway ID to a wallet in the User Dashboard.

Visit **User Dashboard** and sign in into your account.

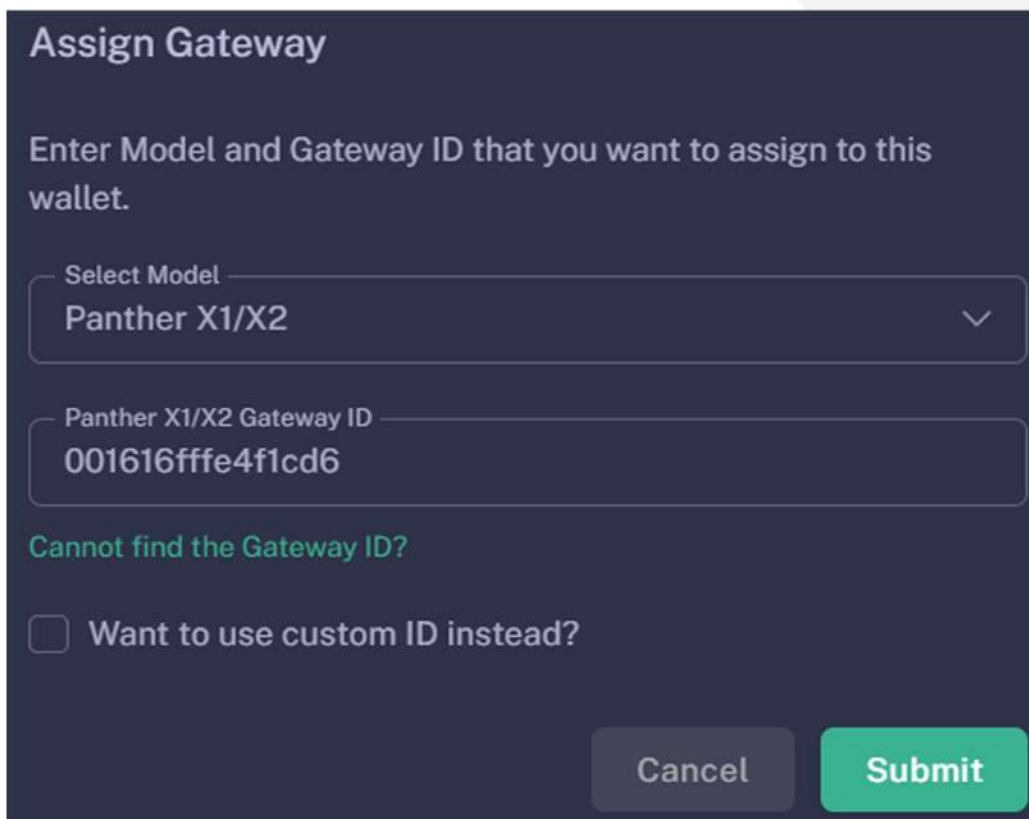
Navigate to the **Wallets** section and select the wallet that you want to use for your software license activation.

Assign your gateway ID to the chosen wallet by clicking on the **Assign** button. If you don't see such a button, it means you haven't purchased a software license for this wallet.



PUBLIC KEY	ALIAS	GATEWAY	BALANCE KDA	BALANCE CRKK
k:f54e8d0096a43bf9333d0761f870c7a54 8e3d0221822b25c8da82e3e70fa6fb1	test123	<b>Assign</b>	0.998 \$0.52	0 \$0.00

Select your gateway **Model**, copy and paste your **Gateway ID** (please double-check that it is correct) and hit the **Submit** button.



**Assign Gateway**

Enter Model and Gateway ID that you want to assign to this wallet.

Select Model  
Panther X1/X2

Panther X1/X2 Gateway ID  
001616fffe4f1cd6

[Cannot find the Gateway ID?](#)

Want to use custom ID instead?

Cancel Submit

Please wait a few minutes to allow the changes to sync to the blockchain.



Congratulations! You have successfully onboarded your **Panther** gateway on Crankk!

*\* Crankk currently supports the following frequencies: EU868 MHz, AU915 MHz and US915 MHz. It is essential to ensure that any hardware purchased from a third-party company for use with Crankk operates on the correct frequency for your region of residence. Crankk Inc. assumes no responsibility for any issues arising from the use of hardware with an incorrect frequency. It is the responsibility of the user to select the appropriate frequency for their region of residence.*

**Please note that any modifications, updates or restrictions made by the gateway manufacturer that may impact the performance or functionality of the gateway on the Crankk network are beyond the control and responsibility of Crankk Inc. Users are advised to check compatibility and seek assistance from the gateway manufacturer for any gateway-related issues.**