



Crankk official guide for onboarding a Dragino gateway

- 1) Dragino Admin Dashboard setup
- 2) User Dashboard setup

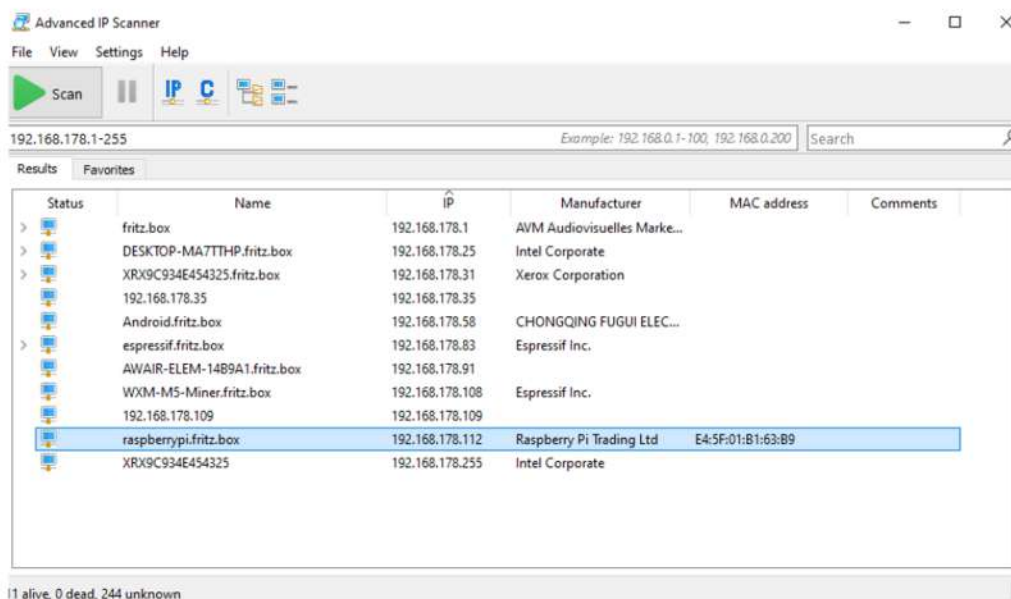


We have automated the onboarding process of Dragino gateways to just a two steps.

1) Dragino Admin Dashboard setup

- 1. Attach the antenna, connect your Dragino via an Ethernet LAN cable to your local network and power it on.**
- 2. Go to your computer and find your gateway IP:**
Check your router to find the **gateway IP address**.

If you are unsure how to do this, you can use free tools like **Advanced IP Scanner** to help you out. Check the **MAC address** of your gateway to find the correct IP address.

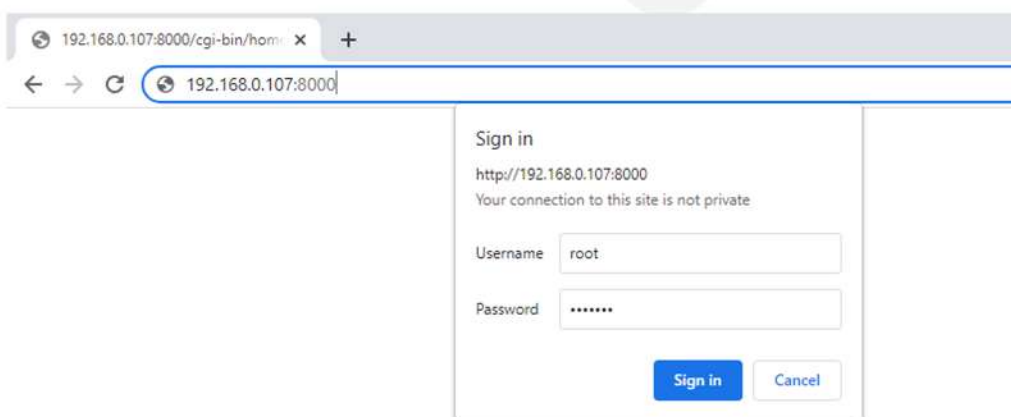


Once you have the LAN IP address of your gateway, open a new browser tab from a PC on the same network and paste the IP.

In our case, the gateway IP address is **https://192.168.178.112:8000**

This way you will open the **Dragino web admin**.

Login using the **username: root** and **password: dragino**



4. Configure the forwarding settings.

We offer you the opportunity for seamless cloud mining by simply forwarding the packets to the **Crankk server**.

With just a few clicks, you can fill out the details as shown in the screenshot below and get your gateway up and running.

The screenshot displays the 'LoRaWAN Configuration' page in the Dragino web interface. The navigation bar at the top includes 'LoRa', 'LoRaWAN', 'MQTT', 'TCP', 'Custom', 'Network', 'System', and 'LogRead'. The configuration is divided into sections: 'General Settings' with 'Email' and 'Gateway ID' fields; 'Primary LoRaWAN Server' with 'Service Provider' (a dropdown menu), 'Server Address', 'Uplink Port', and 'Downlink Port' fields; and 'Packet Filter' with 'Fport Filter' and 'DevAddr Filter' fields. The 'Current Mode' is set to 'LoRaWAN Semtech UDP'. 'Save&Apply' and 'Cancel' buttons are located at the bottom of the configuration area.

Go to LoRaWAN/LoRaWan and copy the device ID

Set the Service Provider to Custom / Private LoRaWAN if not already set.

Enter the following details:

- Server address: enter **one** of the four addresses listed below, based on your **region**:

lora-us.crankk.io

lora-eu.crankk.io

lora-cn.crankk.io

lora-au.crankk.io

- Uplink port: **1700**

- Downlink port: **1700**

- Save&Apply

Please take a note of your **Gateway ID**.

2) User Dashboard setup

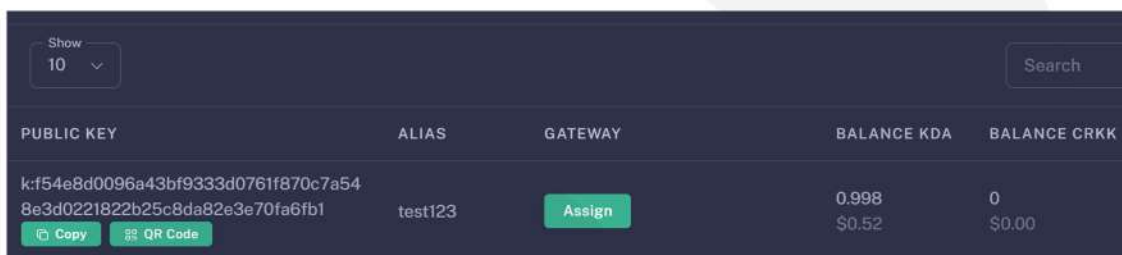
6. Assign your gateway ID to a wallet in the User Dashboard.

Log in to the **User Dashboard**.

Navigate to the **Wallets** section and select the wallet that you want to use for your software license activation.

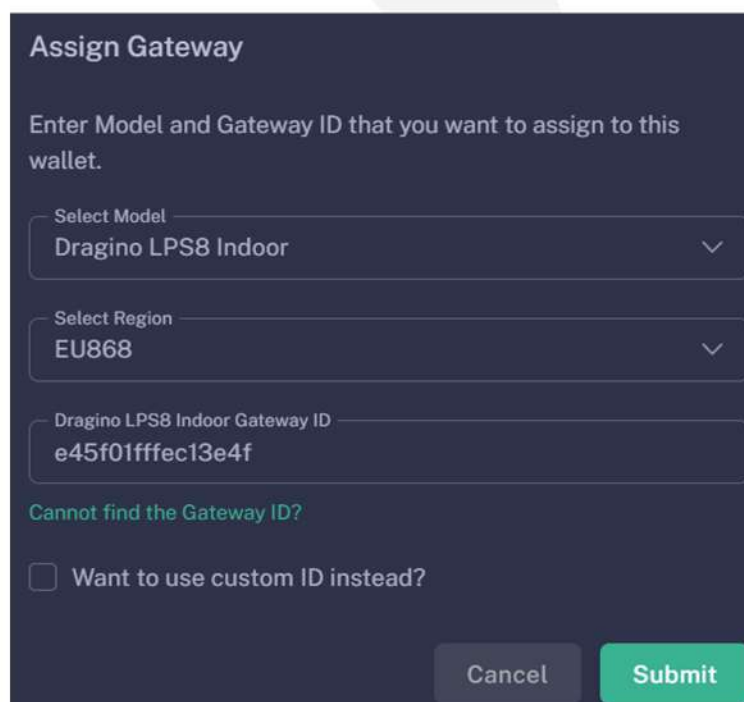
Assign your gateway ID to the chosen wallet by clicking on the **Assign** button. If you don't see such a button, it means you haven't purchased a software license for this wallet.

Don't forget that you need a positive KDA balance to cover the transaction fees.



PUBLIC KEY	ALIAS	GATEWAY	BALANCE KDA	BALANCE CRKK
k:f54e8d0096a43bf9333d0761f870c7a54 8e3d0221822b25c8da82e3e70fa6fb1	test123	Assign	0.998 \$0.52	0 \$0.00

Select your gateway **Model** and **Region**, copy and paste your **Gateway ID** (please double-check that it is correct) and hit the **Submit** button.



Assign Gateway

Enter Model and Gateway ID that you want to assign to this wallet.

Select Model
Dragino LPS8 Indoor

Select Region
EU868

Dragino LPS8 Indoor Gateway ID
e45f01ffec13e4f

Cannot find the Gateway ID?

Want to use custom ID instead?

Cancel Submit

Please wait a few minutes to allow the changes to sync to the blockchain.

Congratulations! You have successfully onboarded your Dragino gateway on Crankk!

** Crankk currently supports the following frequencies: EU868 MHz, AU915 MHz and US915 MHz. It is essential to ensure that any hardware purchased from a third-party company for use with Crankk operates on the correct frequency for your region of residence. Crankk Inc. assumes no responsibility for any issues arising from the use of hardware with an incorrect frequency. It is the responsibility of the user to select the appropriate frequency for their region of residence.*

Please note that any modifications, updates or restrictions made by the gateway manufacturer that may impact the performance or functionality of the gateway on the Crankk network are beyond the control and responsibility of Crankk Inc. Users are advised to check compatibility and seek assistance from the gateway manufacturer for any gateway-related issues.