



Crankk official guide for onboarding a COTX-X1 gateway

- 1) COTX-X1 Forwarding setup
- 2) User Dashboard setup



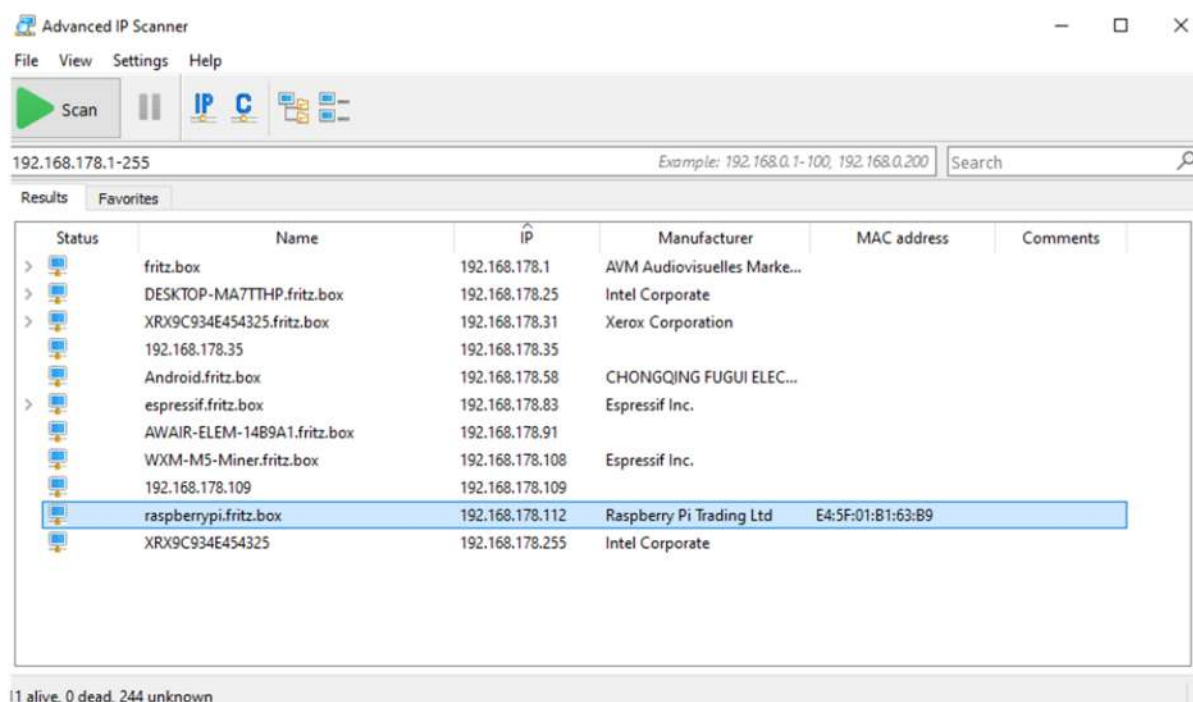
1) COTX-X1 Forwarding setup

We have automated the onboarding process of COTX-X1 gateways to just a two steps.

- 1. Attach the antenna, connect your COTX-X1 via an Ethernet LAN cable to your local network and power it on.**

2. Go to your computer and find your gateway IP:

- Locate your gateway IP address by checking your router settings
- Locate your gateway IP address by installing a free network IP scanner like **Advanced IP Scanner**



3. Download WinSCP app on a PC connected in the same network as the CotX1

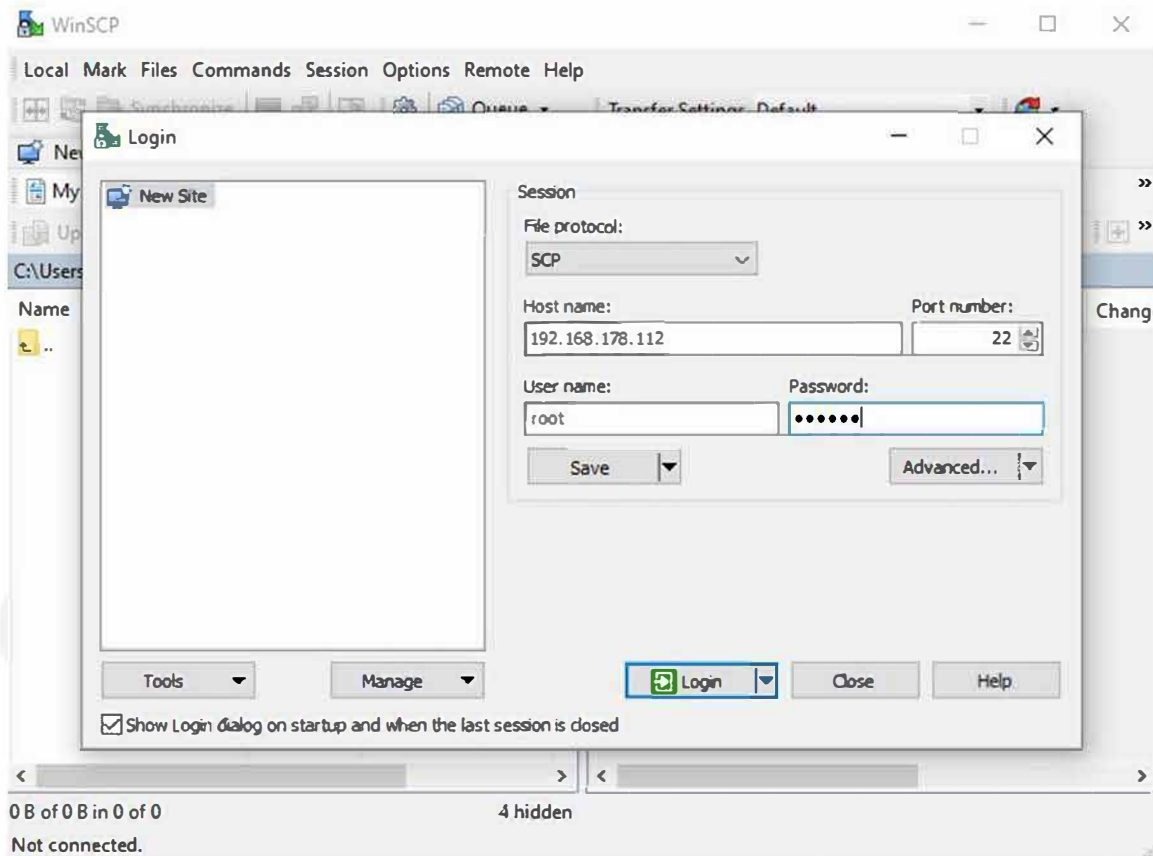
Open WinSCP > New Session > New Site

Choose SCP as the protocol.

Enter the IP address of your CotX1 device (which you can find using an IP scanner) and port number 22.

Username: root

Password: b163b9 (the last 6 symbols from MAC address, shown on IP scanner as well)



4. Find your gateway ID

Once you're logged in, navigate to `helium/lora_net/packet_forwarder` folder.

Open the **global_conf.json** file and search for the **gateway_ID**.

This can be found near the end of the file.

Copy the ID and close the file without saving any changes.

For example:

```
"gateway_conf": {
```

```
  "gateway_ID": "60fb00ffffec64a2"
```

5. Next, we need to forward communication to the cloud server.

Go back to the root folder and navigate to `udp_fwd` folder.

Open **fwd_conf.json** file and edit the following fields:

- Server address: enter **one** of the four addresses listed below, based on your **region**:

lora-us.crankk.io

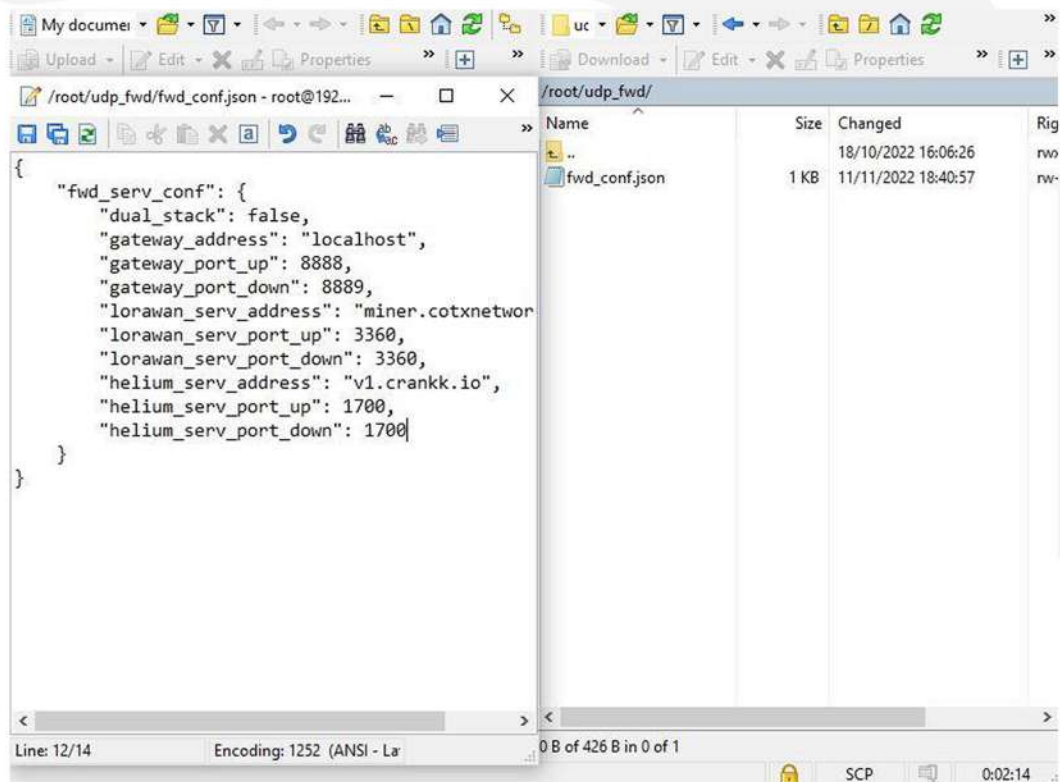
lora-eu.crankk.io

lora-cn.crankk.io

lora-au.crankk.io

- Port Up: **1700**

- Port Down: **1700**



Save the changes and exit WinSCP

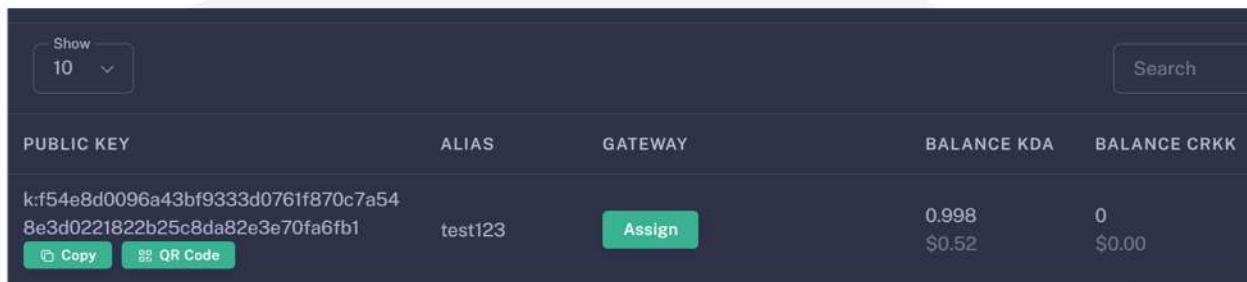
2) User Dashboard setup

6. Assign your gateway ID to a wallet in the User Dashboard. Log in to the **User Dashboard**.

Navigate to the **Wallets** section and select the wallet that you want to use for your software license activation.

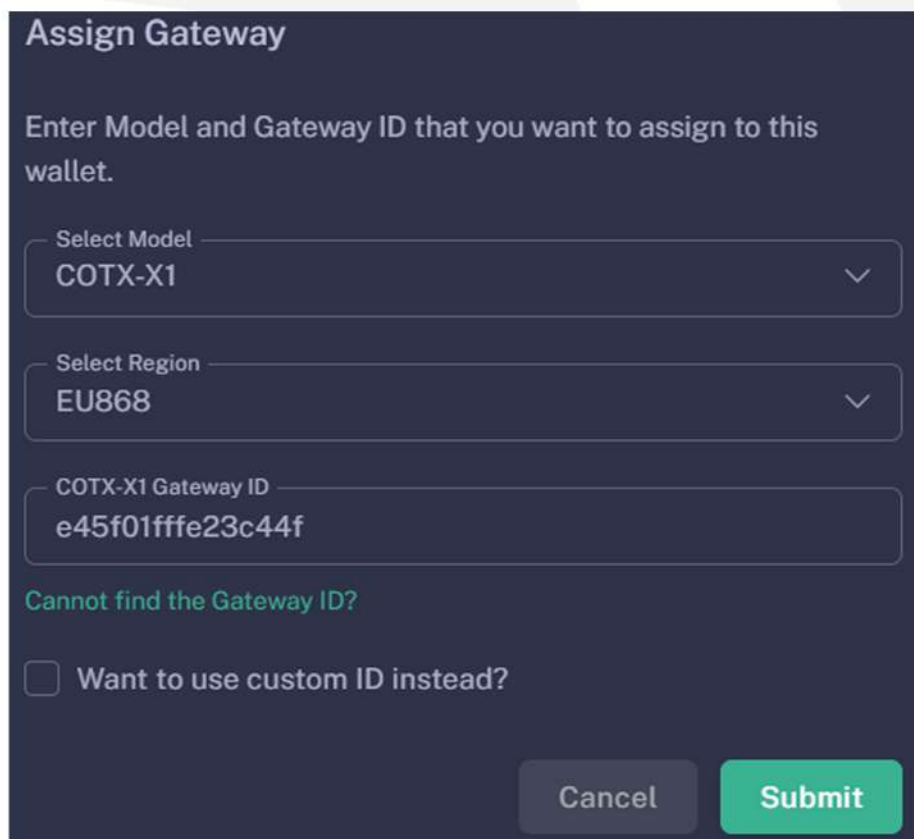
Assign your gateway ID to the chosen wallet by clicking on the **Assign** button. If you don't see such a button, it means you haven't purchased a software license for this wallet.

Don't forget that you need a positive KDA balance to cover the transaction fees.



PUBLIC KEY	ALIAS	GATEWAY	BALANCE KDA	BALANCE CRKK
k:f54e8d0096a43bf9333d0761f870c7a54 8e3d0221822b25c8da82e3e70fa6fb1	test123	Assign	0.998 \$0.52	0 \$0.00

Select your gateway **Model** and **Region**, copy and paste your **Gateway ID** (please double-check that it is correct) and hit the **Submit** button.



Assign Gateway

Enter Model and Gateway ID that you want to assign to this wallet.

Select Model
COTX-X1

Select Region
EU868

COTX-X1 Gateway ID
e45f01fffe23c44f

[Cannot find the Gateway ID?](#)

Want to use custom ID instead?

Cancel Submit

Please wait a few minutes to allow the changes to sync to the blockchain.

Congratulations! You have successfully onboarded your COTX-X1 gateway on Crankk!

** Crankk currently supports the following frequencies: EU868 MHz, AU915 MHz and US915 MHz. It is essential to ensure that any hardware purchased from a third-party company for use with Crankk operates on the correct frequency for your region of residence. Crankk Inc. assumes no responsibility for any issues arising from the use of hardware with an incorrect frequency. It is the responsibility of the user to select the appropriate frequency for their region of residence.*

Please note that any modifications, updates or restrictions made by the gateway manufacturer that may impact the performance or functionality of the gateway on the Crankk network are beyond the control and responsibility of Crankk Inc. Users are advised to check compatibility and seek assistance from the gateway manufacturer for any gateway-related issues.