



Crankk official guide for onboarding a Browan MerryIoT gateway

- 1) Browan MerryIoT Admin Dashboard setup
- 2) User Dashboard setup



We have automated the onboarding process of Browan MerryIoT gateways to just a two steps.

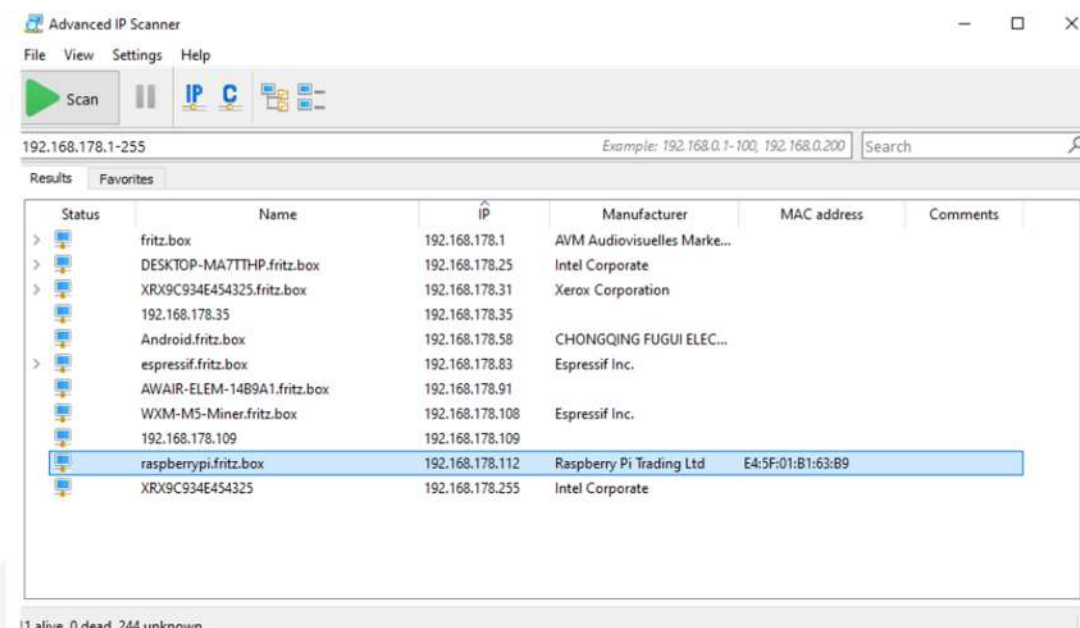
1) Browan MerryIoT Admin Dashboard setup

1. Attach the antenna, connect your Browan MerryIoT via an Ethernet LAN cable to your local network and power it on.

2. Access the Browan MerryIoT Admin Dashboard.

Check your router to find the **gateway IP address**.

If you are unsure how to do this, you can use free tools like **Advanced IP Scanner** to help you out. Check the **MAC address** of your gateway to find the correct IP address.



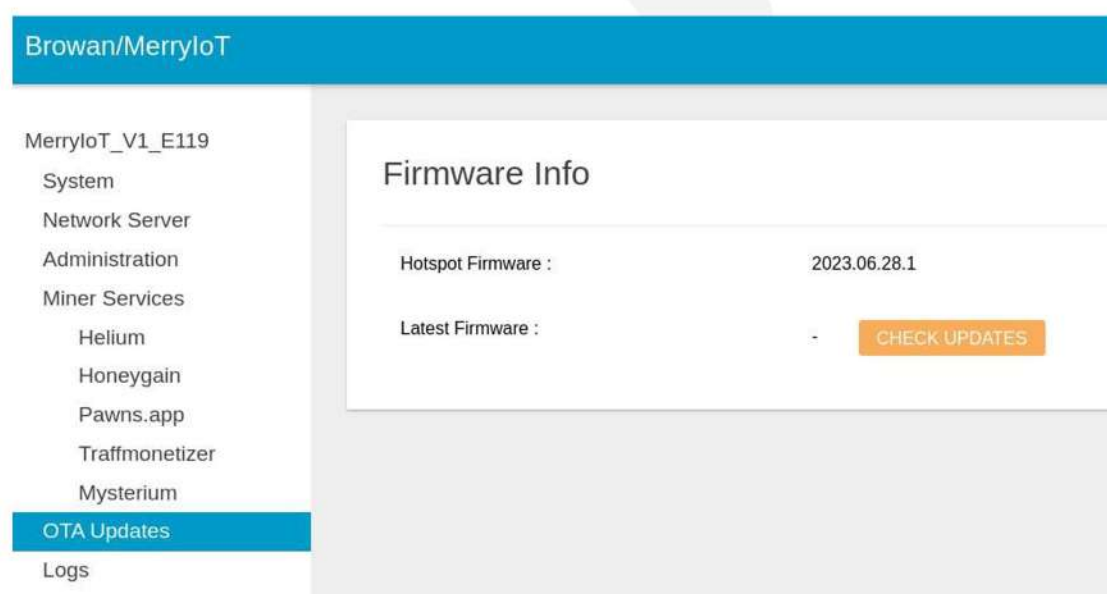
Once you have the LAN IP address of your gateway, open a new browser tab from a PC on the same network and paste the IP.

In our case, the gateway IP address is **https://192.168.178.112**

Next, log in with your credentials.

3. Check for OTA Updates.

This step is necessary to keep your gateway up to date with the latest Firmware.

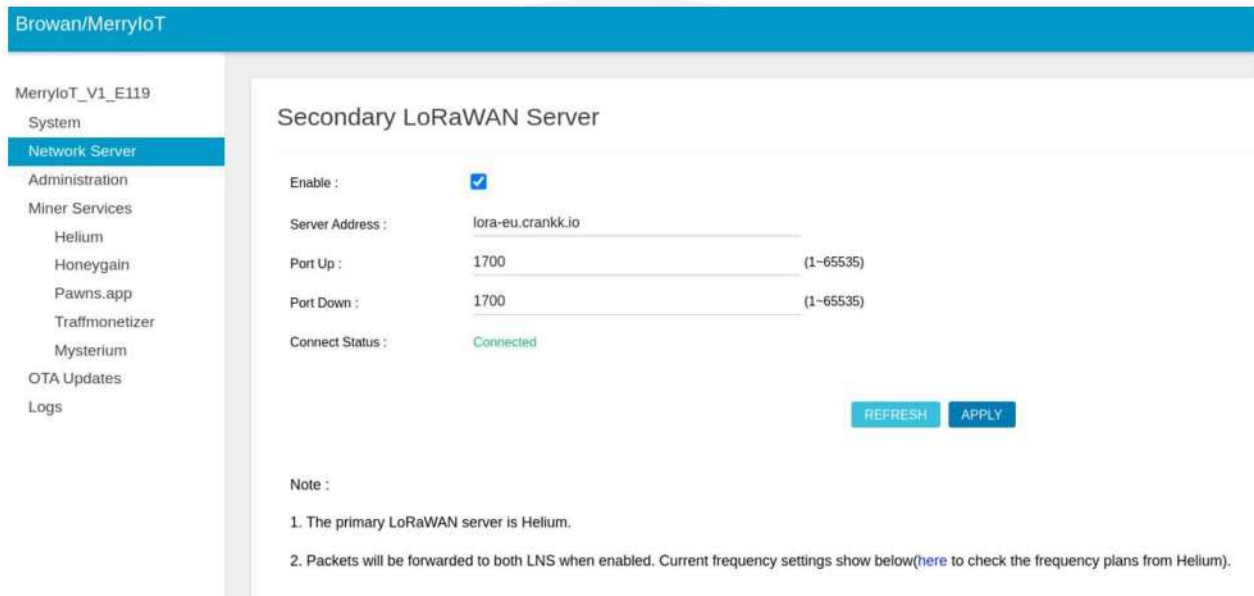


4. Configure the forwarding settings.

We offer you the opportunity for seamless cloud mining by simply forwarding the packets to the **Crankk server**.

With just a few clicks, you can fill out the details as shown in the screenshot below and get your gateway up and running.

Navigate to the **Network Server** section.



Browan/MerryIoT

MerryIoT_V1_E119

System

Network Server

Administration

Miner Services

Helium

Honeygain

Pawns.app

Traffmonetizer

Mysterium

OTA Updates

Logs

Secondary LoRaWAN Server

Enable :

Server Address :

Port Up : (1-65535)

Port Down : (1-65535)

Connect Status : Connected

Note :

1. The primary LoRaWAN server is Helium.
2. Packets will be forwarded to both LNS when enabled. Current frequency settings show below ([here](#) to check the frequency plans from Helium).

Enter the following details:

- Server address: enter **one** of the four addresses listed below, based on your **region**:

lora-us.crankk.io

lora-eu.crankk.io

lora-cn.crankk.io

lora-au.crankk.io

- Port Up: **1700**

- Port Down: **1700**

Check **Enable** and hit the **Apply** button to save the changes.

You can find your **Gateway ID** in **Network Server > LoRa Frequency Assignments** section.

2) User Dashboard setup

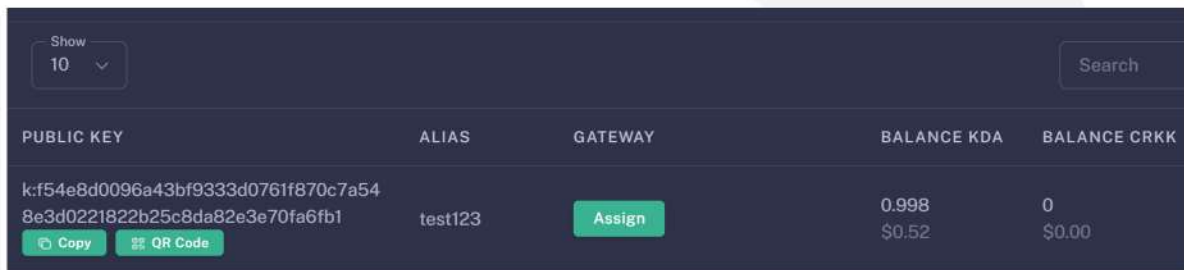
5. Assign your gateway ID to a wallet in the User Dashboard.

Log in to the **User Dashboard**.

Navigate to the **Wallets** section and select the wallet that you want to use for your software license activation.

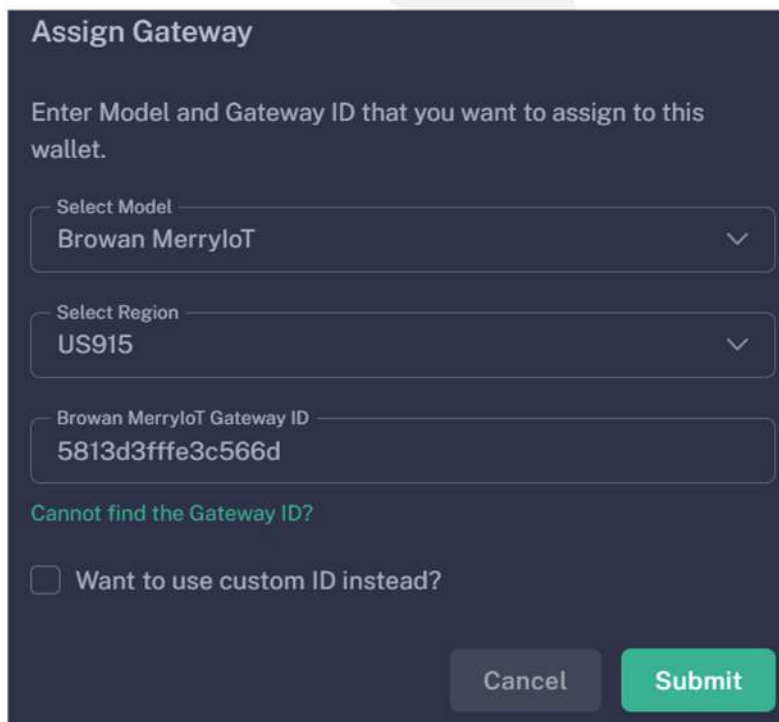
Assign your gateway ID to the chosen wallet by clicking on the **Assign** button. If you don't see such a button, it means you haven't purchased a software license for this wallet.

Don't forget that you need a positive KDA balance to cover the transaction fees.



PUBLIC KEY	ALIAS	GATEWAY	BALANCE KDA	BALANCE CRKK
k:f54e8d0096a43bf9333d0761f870c7a54 8e3d0221822b25c8da82e3e70fa6fb1	test123	Assign	0.998 \$0.52	0 \$0.00

Select your gateway **Model** and **Region**, copy and paste your **Gateway ID** (please double-check that it is correct) and hit the **Submit** button.



Assign Gateway

Enter Model and Gateway ID that you want to assign to this wallet.

Select Model
Browan MerryIoT

Select Region
US915

Browan MerryIoT Gateway ID
5813d3fffe3c566d

[Cannot find the Gateway ID?](#)

Want to use custom ID instead?

Cancel **Submit**

Please wait a few minutes to allow the changes to sync to the blockchain.

Congratulations! You have successfully onboarded your Browan MerryIoT gateway on Crankk!

** Crankk currently supports the following frequencies: EU868 MHz, AU915 MHz and US915 MHz. It is essential to ensure that any hardware purchased from a third-party company for use with Crankk operates on the correct frequency for your region of residence. Crankk Inc. assumes no responsibility for any issues arising from the use of hardware with an incorrect frequency. It is the responsibility of the user to select the appropriate frequency for their region of residence.*

Please note that any modifications, updates or restrictions made by the gateway manufacturer that may impact the performance or functionality of the gateway on the Crankk network are beyond the control and responsibility of Crankk Inc. Users are advised to check compatibility and seek assistance from the gateway manufacturer for any gateway-related issues.