



Crankk official guide for Beta group:

Onboarding Heltec gateway

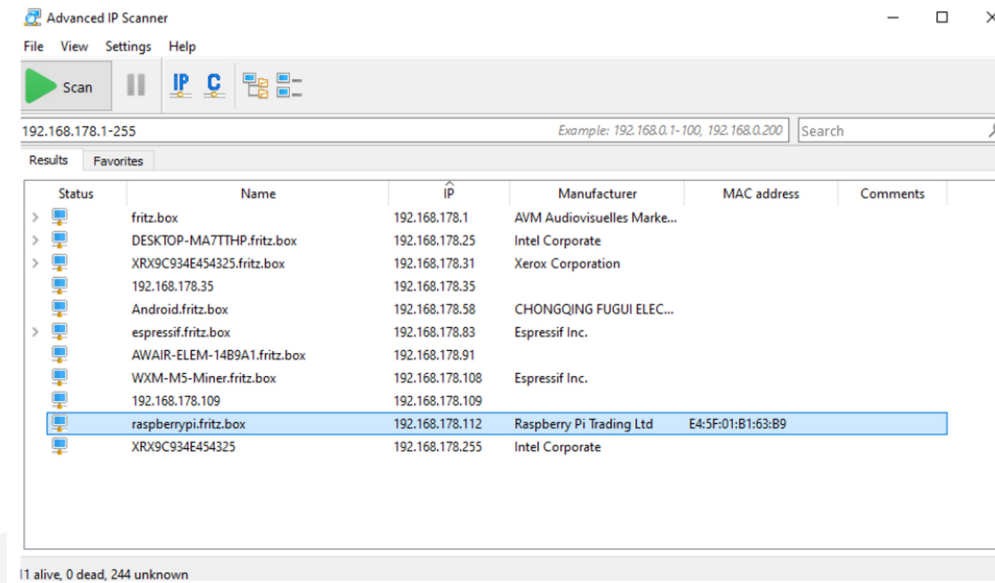


Hello Crankksters,

We heard your voice and automated the onboarding process for Heltec gateways to just a few steps.

1. Power on your Heltec and connect it to your home network
Check your router to find the gateway IP.

If you are unsure how to do this, you can use tools like [Advanced IP Scanner](#) to help you out. Check your hotspot MAC address to find the correct IP address.



2. Download and install Crankk Setup

Access the download link for **CrankkSetup.exe** [here](#) for Windows.

Download the software.

Install **CrankkSetup.exe** on your PC.

3. Open Crankk.exe and choose Heltec web admin

You only need to complete this step once during the initial setup process to generate your credentials.

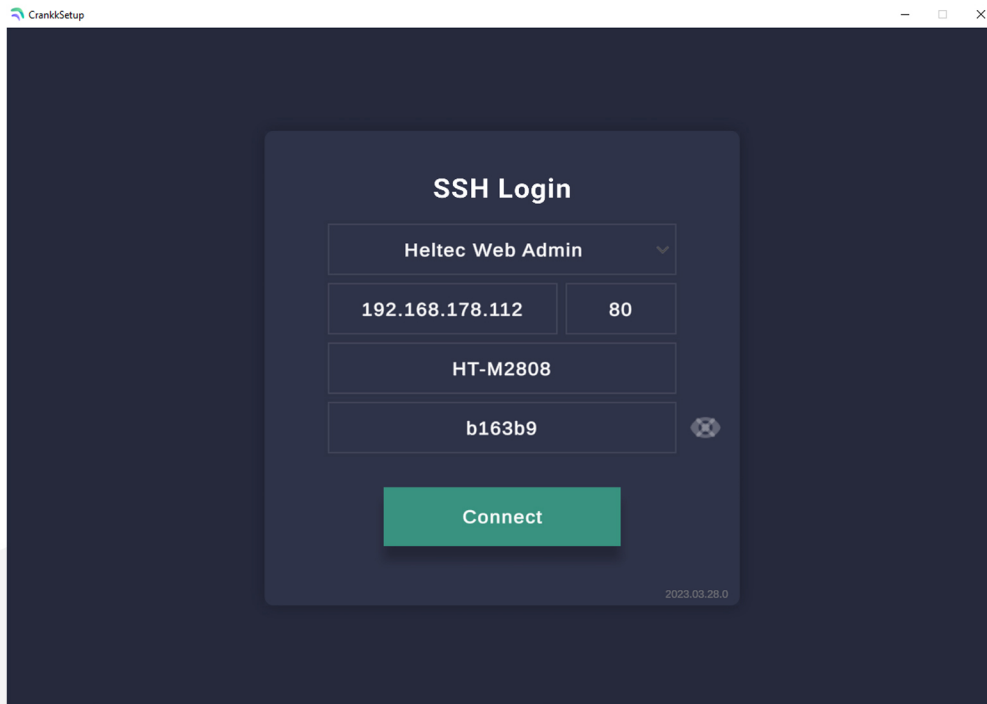
Check your hotspot IP

Port **80**

Username: **HT-M2808**

Pass: last 6 digits of your MAC address, check IP scanner or home router

A quick check of the screenshot above reveals that the password for this Heltec device is **b163b9**



Click **Connect**.

That step has automatically created the correct username and password for you, which you will be using from now on at **password authentication tab**.

Close the Crankk installer and open it again.

4. Navigate to Password authentication and enter the following details:

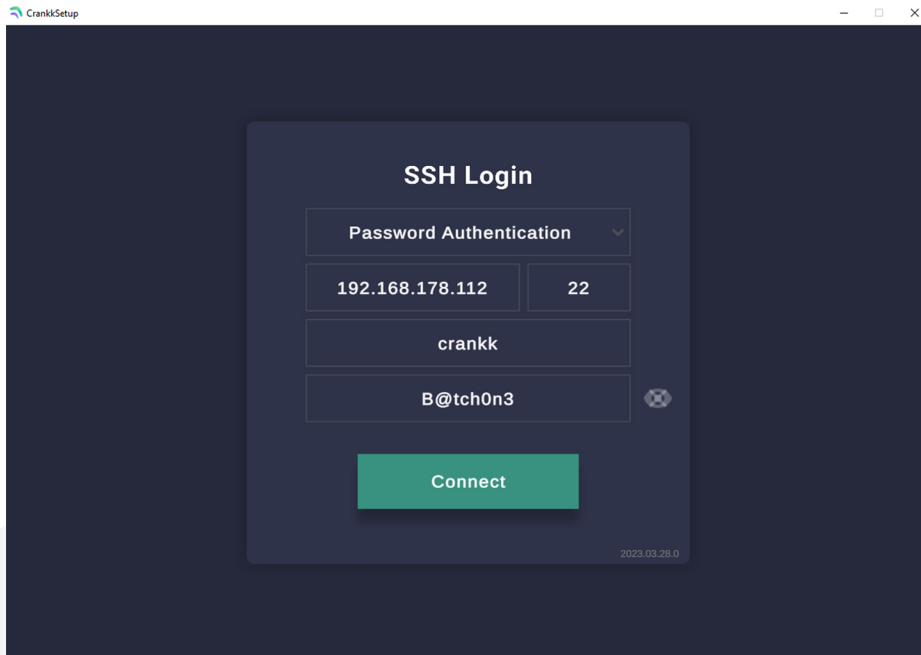
Gateway IP

Port 22

Username: Crankk

Password: B@tch0n3

From now on, please use these username and password to establish a connection with your device through Putty/Crankk installer.



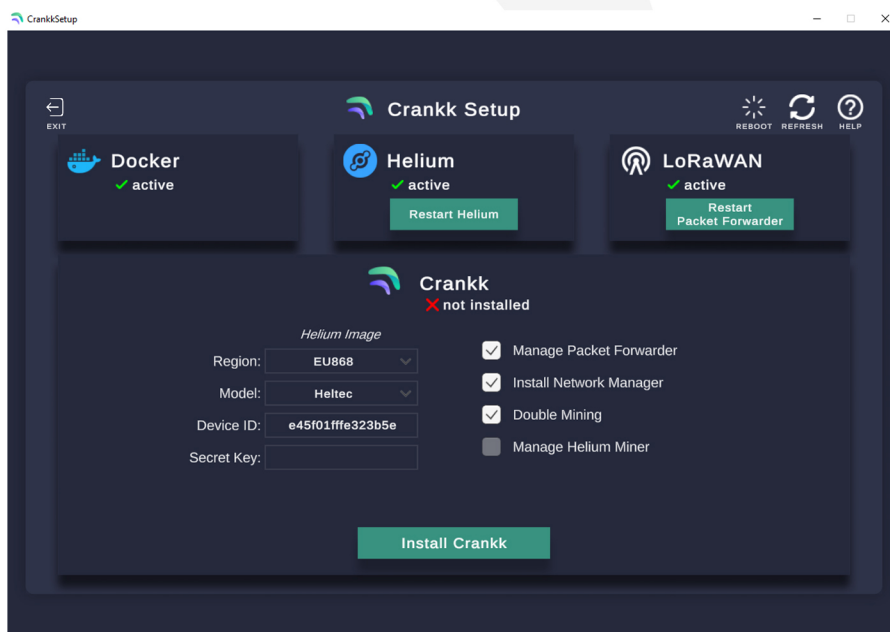
5. Install Crankk

Take note of your region, Device model and **Gateway ID**.

Make sure the boxes on the right are checked, as shown in the image. If you possess your wallet's **secret key**, you may input it into the designated field.

If you haven't wallet yet, then you can import the secret key at a later time using the **local dashboard**.

Once ready press **Install Crankk**.



After the process is complete, you will see a message indicating that the installation is complete. Use the **Reboot** button located in the top-right corner of the screen to finalize updates.

That's all you had to do.

If you need any help, you can always ask the Crankk community or contact Technical support team in Discord / Dashboard.

We are glad to welcome you to the Crankk family!

** Please note that Crankk currently supports EU868MHz, US915MHz, CN470MHz. The frequency AU915MHz will be added very soon before the start of the onboarding process.*

** It is essential to ensure that any hardware purchased from a third-party company for use with Crankk, operates on the correct frequency for your region of residence. Crankk Inc. accepts no responsibility for any issues arising from the use of hardware with an incorrect frequency. It is the responsibility of the user to select the appropriate frequency for their region of residence.*